

Infrared series 1064nm active Q-switched laser

12-25W

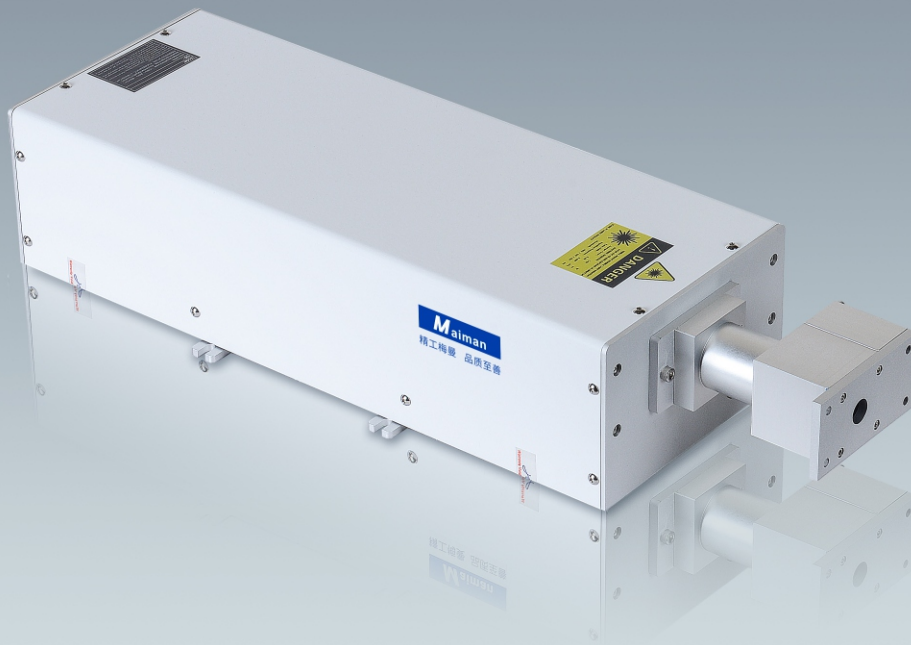
The laser power

IP65

Protection grade IP65

20000hrs⁺

The service life



Introduction

Newly upgraded all-in-one structure, water-cooled, with higher beam quality, power stability and pulse stability, easier to integrate, easy to deal with the marking of transparent products and the etching of ITO films.

Features

- The laser power 12-25W;
- Water cooling, 3-layer protective shell, protection grade IP65, suitable for harsh working environment;
- Pulse width, power and frequency are all adjustable to meet different process requirements;
- All-in-one structure, easier to integrate and smaller in size;
- Ultra-high stability to meet 7*24 hours of work, with a service life > 20,000 hours.

Application

- Transparent key&button marking
- ITO film etching



Specifications

Model No.	MMEPA-1064-12	MMEPA-1064-15	MMEPA-1064-20	MMEPA-1064-25
Optical Characteristics				
Wavelength (nm)	1064nm			
Average Power (W)	>12W@CW	>15W@CW	>20W@CW	>25W@CW
Single Pulse Energy (uJ)	~270uJ@40kHz	~330uJ@40kHz	~450uJ@40kHz	~550uJ@40kHz
Pulse Width (ns)	~16ns@40kHz			
Repetition Rate	20kHz-500kHz			
Pulse Stability	<3% rms			
Long Term Stability	<±3%			
Beam Characteristics				
Polarization Ratio	Horizontal;>100:1			
Beam Diameter	6mm(Built in beam expander)			
Beam Circularity	>90%			
Spatial Mode	TEM ₀₀ , M ² <1.2			
Operating Specifications				
Warm-up Time	<15 minutes from cold start			
Electrical Requirement	DC12V, 350W			
Ambient Temperature	10-35°C, RH<80%			
Storage Conditions	-10-40°C, RH<90%			
Physical Characteristics				
Cooling System	Water-Cooled			
Water Temperature (laser inlet)	25°C			

Dimensional Drawings

